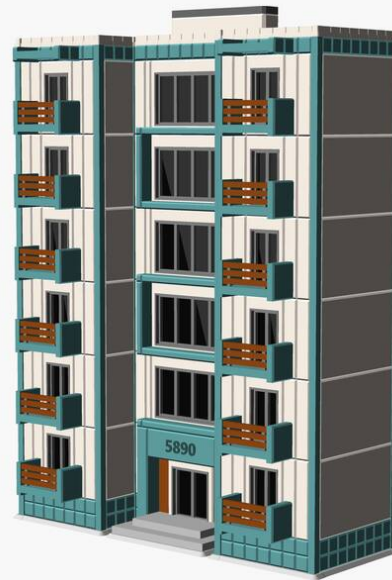


Introduction

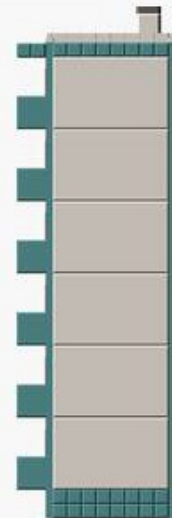
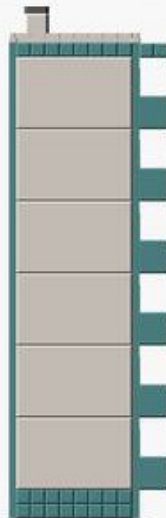
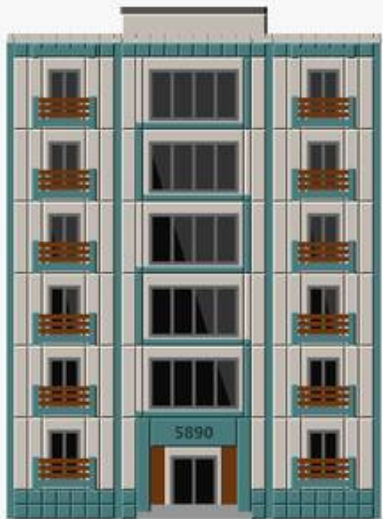
Thank you for your interest in this 3DKitFactory architectural scale model kit.

Kit AK-Z2LJWY is delivered as a complete set of 3MF files designed to reproduce the illustrated structure as a detailed architectural scale model. Components have been engineered for efficient printing, straightforward assembly, and consistent results across a wide range of consumer 3D printers.

For additional architectural releases, visit 3dKitFactory.com.



FRONT-RIGHT VIEW



ELEVATIONS VIEW

Description

A 1/160 scale model of a contemporary urban 6-story building featuring panelized facade styling, multipart assembly, and Backdrop Series™ low-relief design optimized for backdrop placement and continuous streetscape scenes. Architectural features include modern glazed entry with architectural surround, recessed punched windows, space-saving flat-back footprint, stacked projecting inset balconies, a flat roof with parapet walls and rooftop mechanical penthouse structure. The assembled model measures approximately 102 x 43 x 136 mm.



REAR-LEFT VIEW



EXPLODED ASSEMBLY VIEW

Assembly

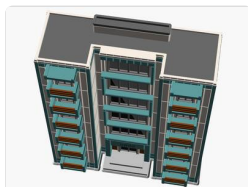
Components may be printed either as a complete assembly or as individual parts, depending on your preferred printing and assembly workflow.

Exterior walls and architectural details may be produced as a single continuous perimeter or as separate wall panels. Printing separate wall panels generally yields higher-quality results and eliminates the need for supports, rafts, and other print aids, as each component is designed to lay flat on the print bed.

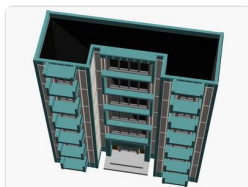
Final finishing, glazing, detailing, material selection, and print settings may be customized to suit the builder's preferred appearance, printing process, and level of detail.

Contents

Included are optimized 3MF files for the complete assembly and all individual components. Files preserve object structure and color surface regions where applicable. Some components require multiple printed copies; the required quantity is indicated in each caption. Below is an illustrated overview of the included digital components:



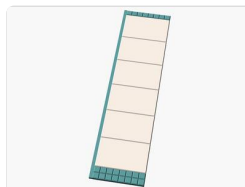
00-Assembly (Qty 1)



01-Perimeter (Qty 1)



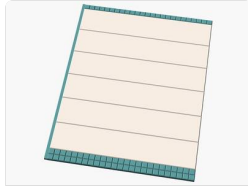
02-Wall (Qty 2)



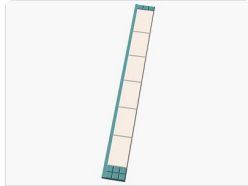
03-Wall (Qty 2)



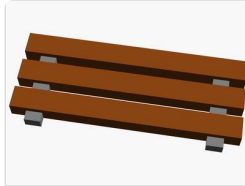
04-Wall (Qty 1)



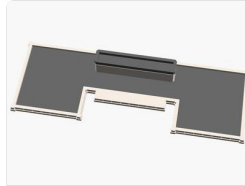
05-Wall (Qty 1)



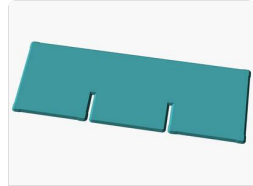
06-Wall (Qty 2)



07-Railing (Qty 12)



08-Roof (Qty 1)



09-Base (Qty 1)

This kit is available at 3dKitFactory.com/kit/AK-Z2LJWY .