

## Introduction

Thank you for your interest in this 3DKitFactory architectural scale model kit. KIT AJ-I2DSRY is delivered as a complete digital building kit designed to reproduce the illustrated structure at scale.

Included are optimized 3MF files for both the complete assembly and individual components. Files are structured with organized object grouping and surface assignments suitable for color-aware and multi-material slicing workflows. Surface regions correspond to the illustrated architectural finishes.

For additional architectural releases, visit [3dKitFactory.com](http://3dKitFactory.com).



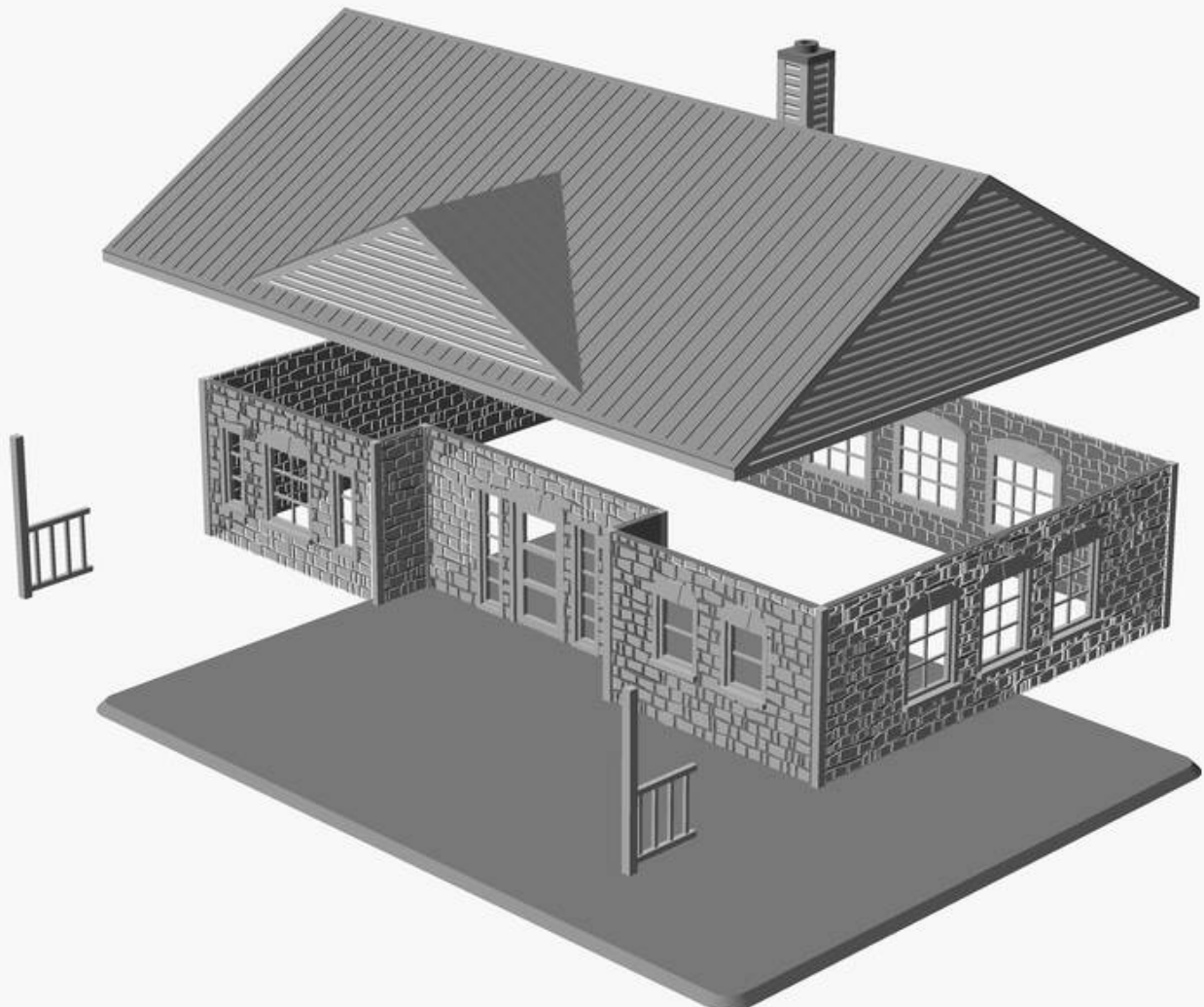
## Description

This model features: a ranch-style design, covered front porch, 7/12 pitch gable roof with overhanging eaves. . Additional architectural and structural details are as follows:

- 1/87 Scale
- 14 Windows
- 2 Exterior Doors
- 8 Wall panels
- Chimney with enclosed chase
- Double panel door
- Glass panel door
- Standing seam metal roof system
- Stone veneer exterior siding
- Support posts and railings



REAR-LEFT VIEW



EXPLODED ASSEMBLY VIEW

## Assembly

Components may be printed as a complete assembly or as individual parts. Exterior walls may be produced as one continuous perimeter or as separate panels. Reference the Elevations and Exploded Assembly Views for general orientation during assembly.

Final surface treatment, glazing, detailing, material selection, and print configuration are at the discretion of the builder.

## Contents

Included are optimized 3MF files for the complete assembly and all individual components. Files preserve object structure and color surface regions where applicable. Below is an illustrated overview of the included digital components:



This kit is available at [3dKitFactory.com/kit/AJ-I2DSRY](https://3dKitFactory.com/kit/AJ-I2DSRY) .